

For more information



Tel: 044 9340801



Web: www.locallinklwr.ie

 [tfilocallinklwr](https://www.facebook.com/tfilocallinklwr)

 [tfilocallinklwr](https://www.instagram.com/tfilocallinklwr)

 [locallinklwr](https://twitter.com/locallinklwr)



Operated by:

TFI Local Link Longford Westmeath Roscommon,
Governor's House, County Buildings Complex,
Mount Street, Mullingar, Westmeath, N91 RW52



Ask your driver or other staff members for assistance



Our vehicles are wheelchair accessible



Children under 5 years and holders of the Free Travel Pass, travel free of charge. Adult Return €4 Single €2.50



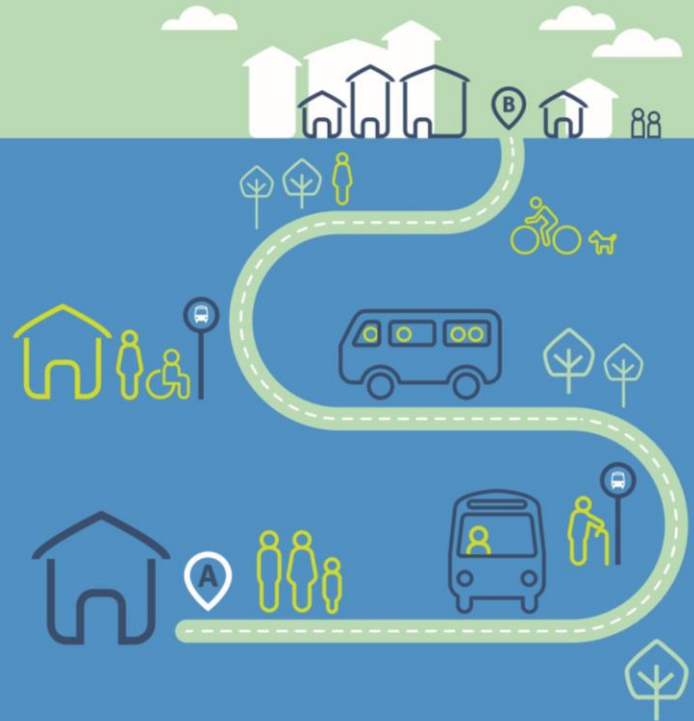
This is a door-to-door bus service which can divert from its route to collect you and drop you off at your home, where possible. Please contact us to check if your home is within the area served and to book your seat. The timetables can also vary slightly to accommodate collections.

Information correct at time of print: August 2024

Route

RR31

Boyle-Ballinafad-Lough Key Wood-Boyle Loop



local link

Longford Westmeath Roscommon



Timetable

RR31

Boyle-Ballinfad-Lough Key Wood- Boyle Loop

Day(s): Monday Wednesday Friday

Boyle – Ballinfad - Lough Key Wood - Boyle Loop	
Departs	
Boyle (King House)	09:15
Ballinfad	09:27
Corrigeenroe	09:37
Lough Key Wood	09:47
Knockvicar	09:52
Boyle (King House)	10:14

Boyle - Lough Key Wood – Ballinfad - Boyle Loop	
Departs	
Boyle (King House)	13:00
Knockvicar	13:22
Lough Key Wood	13:27
Corrigeenroe	13:37
Ballinfad	13:47
Boyle (King House)	13:59

Travelling every Monday Wednesday Friday
Request stop for Lough Key Forest Park

PLEASE NOTE: The above times are approximate as this service is demand responsive, where available. It may deviate from the route to collect passengers at their door (door-to-door service). Passengers are required to book their seat the day before they wish to travel to avail of this service.